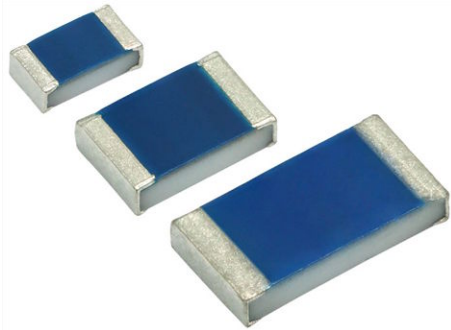


## Temperature Dependent Platinum Thin Film Chip Resistor (RTD)



### FEATURES

- Standardized characteristics according to IEC 60751
- AEC-Q200 qualified
- Short reaction times down to  $t_{0.9} \leq 2$  s (in air)
- Outstanding stability of temperature characteristic
- Superior temperature cycling robustness
- Material categorization: for definitions of compliance please see [www.vishay.com/doc?99912](http://www.vishay.com/doc?99912)



**RoHS**  
COMPLIANT  
HALOGEN  
**FREE**

### DESIGN SUPPORT TOOLS AVAILABLE



3D Models



Design Tools



SPICE Models

PTS AT SMD flat chip temperature dependent resistors are the perfect choice for temperature control of electronics operating under varying environmental conditions. The highly controlled platinum thin film manufacturing process guarantees an outstanding stability of temperature characteristics which ensures reliable operation even under harsh conditions. Typical applications include automotive, aviation and industrial electronics.

### APPLICATIONS

Temperature measurement and control in

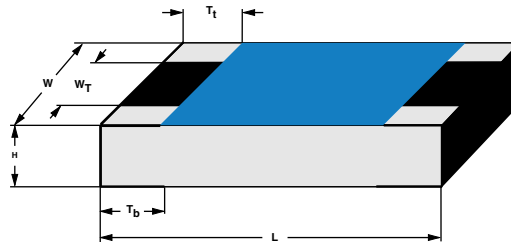
- Automotive electronics
- Aviation electronics
- Industrial electronics

### TECHNICAL SPECIFICATIONS

| DESCRIPTION  | PTS0603M                          | PTS0805M                    | PTS1206M                                    |                      |
|--|-----------------------------------|-----------------------------|---|----------------------|
| Resistance values $R_0$ at 0 °C  | 100 $\Omega$                      | 100 $\Omega$ , 500 $\Omega$ | 100 $\Omega$ , 500 $\Omega$ , 1000 $\Omega$ |                      |
| Temperature coefficient (0 °C to +100 °C), IEC60751                              | +3850 ppm/K                       |                             |   |                      |
| Tolerance classes  | F0.3, F0.6                        |                             |   |                      |
| Temperature range  | -55 °C to +175 °C                 |                             |   |                      |
| Long term stability $ \Delta R_0/R_0 $ ;<br>$R_0$ change after 1000 h at +155 °C | $\leq 0.1$ %                      |                             |   |                      |
| Insulation resistance  | $> 10$ M $\Omega$                 |                             |   |                      |
| Measurement current $I_{meas.}$ (DC) <sup>(1)</sup>                              | 100 $\Omega$                      | 0.1 mA to 0.50 mA           | 0.1 mA to 1.0 mA                            | 0.1 mA to 1.0 mA     |
|  | 500 $\Omega$                      | -                           | 0.1 mA to 0.40 mA                           | 0.1 mA to 0.40 mA    |
|  | 1000 $\Omega$                     | -                           | -   | 0.1 mA to 0.25 mA    |
| Self-heating at 0 °C <sup>(2)</sup>  | Calm air<br>( $v = 0.0$ m/s)      | $\leq 0.9$ K/mW             | $\leq 0.8$ K/mW                             | $\leq 0.7$ K/mW      |
| Thermal response time <sup>(2)</sup>   | Flowing water<br>( $v = 0.4$ m/s) | $t_{0.5} \leq 0.1$ s        | $t_{0.5} \leq 0.2$ s                        | $t_{0.5} \leq 0.3$ s |
|  |                                   | $t_{0.9} \leq 0.2$ s        | $t_{0.9} \leq 0.3$ s                        | $t_{0.9} \leq 0.4$ s |
|  | Flowing air<br>( $v = 3.0$ m/s)   | $t_{0.5} \leq 1.0$ s        | $t_{0.5} \leq 1.5$ s                        | $t_{0.5} \leq 2.0$ s |
|  |                                   | $t_{0.9} \leq 2.0$ s        | $t_{0.9} \leq 3.0$ s                        | $t_{0.9} \leq 5.0$ s |
| Failure rate: FIT <sub>observed</sub>  | $\leq 0.5 \times 10^{-9}$ /h      |                             |   |                      |

### Notes

- <sup>(1)</sup> Indicated measurement currents can be applied continuously with self-heating effect of less than 0.1 °C
- <sup>(2)</sup> Valid for sensor element only, in low dissipative mode. Response time and self-heating are influenced by mounting materials as substrate, solder lands, tracks and solders used

**DIMENSIONS** in millimeters


| DIMENSIONS AND MASS |                     |                   |             |                |                  |                  |           |
|---------------------|---------------------|-------------------|-------------|----------------|------------------|------------------|-----------|
| TYPE                | H                   | L                 | W           | W <sub>T</sub> | T <sub>t</sub>   | T <sub>b</sub>   | MASS (mg) |
| PTS 0603            | 0.45 + 0.1/- 0.05   | 1.55 +0.05 / -0.1 | 0.85 ± 0.1  | > 75 % of W    | 0.3 + 0.15/- 0.2 | 0.3 + 0.15/- 0.2 | 1.9       |
| PTS 0805            | 0.45 + 0.1 / - 0.05 | 2.0 ± 0.1         | 1.25 ± 0.15 | > 75 % of W    | 0.4 ± 0.2        | 0.4 ± 0.2        | 4.6       |
| PTS 1206            | 0.55 ± 0.1          | 3.1 + 0.1 / - 0.2 | 1.6 ± 0.15  | > 75 % of W    | 0.5 ± 0.25       | 0.5 ± 0.25       | 9.2       |

**SOLDER PAD DIMENSIONS** in millimeters


| RECOMMENDED SOLDERPAD DIMENSIONS |                |      |      |      |                  |      |      |      |
|----------------------------------|----------------|------|------|------|------------------|------|------|------|
| TYPE                             | WAVE SOLDERING |      |      |      | REFLOW SOLDERING |      |      |      |
|                                  | G              | Y    | X    | Z    | G                | Y    | X    | Z    |
| PTS 0603                         | 0.55           | 1.1  | 1.1  | 2.75 | 0.65             | 0.7  | 0.95 | 2.05 |
| PTS 0805                         | 0.8            | 1.25 | 1.50 | 3.2  | 0.9              | 0.9  | 1.4  | 2.7  |
| PTS 1206                         | 1.4            | 1.5  | 1.9  | 4.4  | 1.5              | 1.15 | 1.75 | 3.8  |

**DESCRIPTION**

A homogeneous film of platinum is deposited on a high grade (Al<sub>2</sub>O<sub>3</sub>) ceramic substrate and conditioned to achieve the correct temperature coefficient and stability. The sensor-elements are covered by a protective coating designed for electrical, mechanical and climatic protection. The terminations receive a final pure matte tin on nickel plating, the immunity against tin whisker growth has been proven under extensive testing.

**QUALITY**

The result of the determined production is verified by an extensive testing procedure and optical inspection performed on 100 % of the individual sensors. Only accepted products are laid directly into the paper tape in accordance with IEC 60286-3.

**STORAGE**

Solderability is specified for 2 years after production or re-qualification. The permitted storage time is 20 years.

**ASSEMBLY**

The Pt-sensors are suitable for processing on automatic SMD assembly systems. They are suitable for automatic soldering using wave, reflow or vapour phase as shown in IEC61760-1. The encapsulation is resistant to all cleaning solvents commonly used in the electronics industry,

including alcohols, esters and aqueous solutions. The suitability of conformal coatings, if applied, shall be qualified by appropriate means to ensure the long-term stability of the whole system. The use of potting resins in close contact with the protective coating or terminations is not recommended.

For frequent high temperature usage, thermal compatible substrates and solder alloys should be selected to minimize any thermal mismatch.

All products comply with the CEFC-EECA-EICTA list of legal restrictions on hazardous substances.

This includes full compatibility with the following directives:

- 2000/53/EC End of Life Vehicle Directive (ELV) and Annex II (ELV II)
- 2011/65/EU Restriction of the use of Hazardous Substances Directive (RoHS)
- 2002/96/EC Waste Electrical and Electronic Equipment Directive (WEEE)

**APPROVALS**

The Pt-sensors are tested in accordance with

- IEC 60751
- IEC 60068 series

The PTS AT are AEC-Q200 qualified.



| PART NUMBER AND PRODUCT DESCRIPTION (1)               |                      |                                   |                                    |   |   |                |   |   |   |   |   |   |   |   |   |   |   |
|---|----------------------|-----------------------------------|------------------------------------|---|---|----------------|---|---|---|---|---|---|---|---|---|---|---|
| <b>PART NUMBER (2): PTS0805M1B500RP100</b>            |                      |                                   |                                    |   |   |                |   |   |   |   |   |   |   |   |   |   |   |
| P   | T                    | S                                 | 0                                  | 8   | 0   | 5              | M | 1 | B | 5 | 0 | 0 | R | P | 1 | 0 | 0 |
| <b>TYPE</b>   | <b>SIZE CODE</b>     | <b>VERSION</b>                    | <b>TOLERANCE CLASS</b>             | <b>RESISTANCE VALUE</b>                       | <b>PACKAGING (3)</b>                        | <b>SPECIAL</b> |   |   |   |   |   |   |   |   |   |   |   |
| 3 digits  | 4 digits             | 1 digit                           | 2 digits                           | 4 digits                                      | 2 digits                                    | 2 digits       |   |   |   |   |   |   |   |   |   |   |   |
| PTS = platinum temperature sensor SMD                 | 0603<br>0805<br>1206 | M = AT (automotive)               | 1B = class F0.3<br>2B = class F0.6 | 100R = 100 Ω<br>500R = 500 Ω<br>1K00 = 1000 Ω | PU<br>P1<br>P5                              | 00 = standard  |   |   |   |   |   |   |   |   |   |   |   |
| <b>PRODUCT DESCRIPTION (4): PTS 0805-B AT P1 500R</b> |                      |                                   |                                    |   |   |                |   |   |   |   |   |   |   |   |   |   |   |
| <b>PTS</b>  | <b>0805</b>          | <b>-B</b>                         | <b>AT</b>                          | <b>P1</b>                                     | <b>500R</b>                                 |                |   |   |   |   |   |   |   |   |   |   |   |
| <b>TYPE</b>   | <b>SIZE CODE</b>     | <b>TOLERANCE CLASS</b>            | <b>VERSION</b>                     | <b>PACKAGING (3)</b>                          | <b>RESISTANCE VALUE</b>                     |                |   |   |   |   |   |   |   |   |   |   |   |
| PTS = platinum temperature sensor SMD                 | 0603<br>0805<br>1206 | B = class F0.3<br>2B = class F0.6 | AT = automotive                    | PU<br>P1<br>P5                                | 100R = 100 Ω<br>500R = 500 Ω<br>1K = 1000 Ω |                |   |   |   |   |   |   |   |   |   |   |   |

**Notes**

- (1) Products can be ordered using either the PART NUMBER or the PRODUCT DESCRIPTION
- (2) The part number is shown to facilitate the introduction of a unified part numbering system
- (3) Please refer to table PACKAGING
- (4) We recommend that the Production Description is used to minimize the possibility of errors in order handling

| PACKAGING |      |          |                             |       |       |             |                   |
|-----------|------|----------|-----------------------------|-------|-------|-------------|-------------------|
| TYPE      | CODE | QUANTITY | CARRIER TAPE                | WIDTH | PITCH | BOX/REEL    | BOX/REEL DIAMETER |
| PTS 0603  | PU   | 100      | Paper tape acc. IEC 60286-3 | 8 mm  | 4 mm  | Plastic box | 114 mm            |
| PTS 0805  | P1   | 1000     |                             |       |       | Reel        | 180 mm/7"         |
| PTS 1206  | P5   | 5000     |                             |       |       |             |                   |

| TEST AND REQUIREMENTS - PERFORMANCE |   |   |                             |                     |
|-------------------------------------|---|---|-----------------------------|---------------------|
| TEST                                | CONDITIONS  | REQUIREMENTS<br>$ \Delta R_0/R_0  \leq \pm$ | TYPICAL PERFORMANCE         |                     |
|                                     |   |   | $ \Delta R_0/R_0  \leq \pm$ | $\Delta T \leq \pm$ |
| High temperature exposure (storage) | AEC-Q200, 1000 h at 155 °C  | 0.1 %                                       | 0.015 %                     | 0.04 °C             |
| High temperature exposure (storage) | 1000 h at 175 °C  | 0.2 %                                       | 0.018 %                     | 0.05 °C             |
| Temperature cycling                 | AEC-Q200, 1000 cycles<br>-55 °C to +155 °C                            | 0.5 %                                       | 0.04 %                      | 0.10 °C             |
| Biased humidity                     | 1000 h, 1 mA biased at 85 °C / 85 % rh                                | 0.5 %                                       | 0.015 %                     | 0.04 °C             |
| Operational life                    | 1000 h, 1 mA biased at 125 °C   | 0.2 %                                       | 0.01 %                      | 0.03 °C             |
| Vibration                           | MIL-STD 202, method 204   | 0.1 %                                       | 0.02 %                      | 0.05 °C             |
| Mechanical shock                    | MIL-STD 202, method 213   | 0.1 %                                       | 0.02 %                      | 0.05 °C             |
| Resistance to soldering heat        | Solder bath dipping 10 s at 260°C                                     | 0.25 %                                      | 0.05 %                      | 0.13 °C             |
| ESD                                 | AEC-Q200-002, HBM (CD) 1.0 kV (0603),<br>1.5 kV (0805), 2.0 kV (1206) | 0.2 %                                       | 0.01 %                      | 0.03 °C             |
| Board flex                          | AEC-Q200-005, 2 mm during 60 s  | 0.2 %                                       | 0.015 %                     | 0.04 °C             |
| Terminal strength                   | AEC-Q200-006, shear test<br>10 N / 17.7 N during 60 s                 | 0.25 %                                      | 0.018 %                     | 0.05 °C             |



**FUNCTIONAL PERFORMANCE**

The temperature resistance relationships of the PTS series follow different equations:

For the temperature range of -55 °C up to 0 °C:

$$R_T = R_0 \times (1 + A \times T + B \times T^2 + C \times (T - 100 \text{ °C}) \times T^3)$$

And for the temperature range of 0 °C up to +175 °C:

$$R_T = R_0 \times (1 + A \times T + B \times T^2)$$

$R_T$ : Resistance as a function of temperature

$R_0$ : Nominal resistance value at 0 °C

$T$ : Temperature in °C

According to IEC 60751 the values of the coefficients are:

$$A = 3.9083 \times 10^{-3} \text{ °C}^{-1}$$

$$B = -5.775 \times 10^{-7} \text{ °C}^{-2}$$

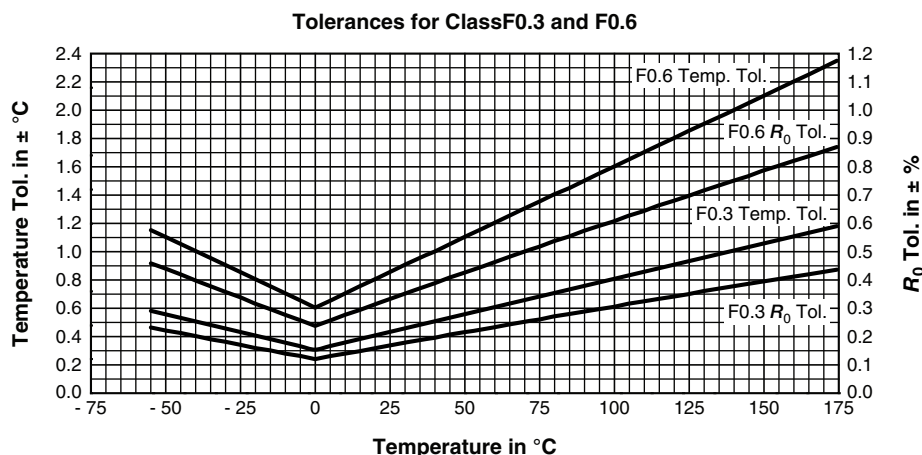
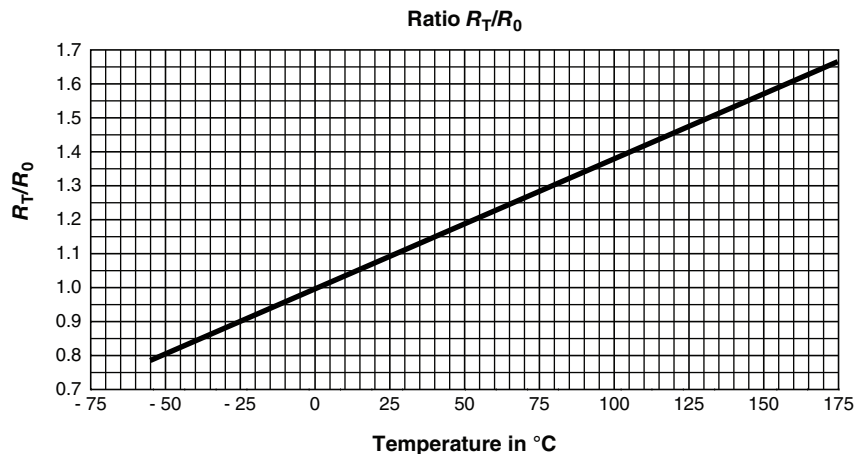
$$C = -4.183 \times 10^{-12} \text{ °C}^{-4}$$

The tolerances values of the PTS AT series are classified by the following equations as specified by IEC 60751:

Class F0.3:  $\Delta T_{F0.3} = \pm (0.3 + 0.005 \times |T|)$

Class F0.6:  $\Delta T_{F0.6} = \pm (0.6 + 0.010 \times |T|)$

| <b>NOMINAL RESISTANCE VALUES AND TEMPERATURE TOLERANCE</b> |                         |                       |                        |                |            |
|--|-------------------------|-----------------------|------------------------|----------------|------------|
| TEMPERATURE<br>in °C                                       | NOMINAL RESISTANCE in Ω |                       |                        | TOLERANCE in K |            |
|  | $R_0 = 100 \text{ Ω}$   | $R_0 = 500 \text{ Ω}$ | $R_0 = 1000 \text{ Ω}$ | CLASS F0.3     | CLASS F0.6 |
| -55  | 78.319                  | 391.59                | 783.19                 | ± 0.58         | ± 1.15     |
| -50  | 80.306                  | 401.53                | 803.06                 | ± 0.55         | ± 1.10     |
| -25  | 90.192                  | 450.96                | 901.92                 | ± 0.43         | ± 0.85     |
| 0  | 100.00                  | 500.00                | 1000.00                | ± 0.30         | ± 0.60     |
| 25   | 109.73                  | 548.67                | 1097.35                | ± 0.43         | ± 0.85     |
| 50   | 119.40                  | 596.99                | 1193.97                | ± 0.55         | ± 1.10     |
| 75   | 128.99                  | 644.94                | 1289.87                | ± 0.68         | ± 1.35     |
| 100  | 138.51                  | 692.53                | 1385.06                | ± 0.80         | ± 1.60     |
| 125  | 147.95                  | 739.76                | 1479.51                | ± 0.93         | ± 1.85     |
| 150  | 157.33                  | 786.63                | 1573.25                | ± 1.05         | ± 2.10     |
| 175  | 166.63                  | 833.13                | 1666.27                | ± 1.18         | ± 2.35     |





## Disclaimer

ALL PRODUCT, PRODUCT SPECIFICATIONS AND DATA ARE SUBJECT TO CHANGE WITHOUT NOTICE TO IMPROVE RELIABILITY, FUNCTION OR DESIGN OR OTHERWISE.

Vishay Intertechnology, Inc., its affiliates, agents, and employees, and all persons acting on its or their behalf (collectively, "Vishay"), disclaim any and all liability for any errors, inaccuracies or incompleteness contained in any datasheet or in any other disclosure relating to any product.

Vishay makes no warranty, representation or guarantee regarding the suitability of the products for any particular purpose or the continuing production of any product. To the maximum extent permitted by applicable law, Vishay disclaims (i) any and all liability arising out of the application or use of any product, (ii) any and all liability, including without limitation special, consequential or incidental damages, and (iii) any and all implied warranties, including warranties of fitness for particular purpose, non-infringement and merchantability.

Statements regarding the suitability of products for certain types of applications are based on Vishay's knowledge of typical requirements that are often placed on Vishay products in generic applications. Such statements are not binding statements about the suitability of products for a particular application. It is the customer's responsibility to validate that a particular product with the properties described in the product specification is suitable for use in a particular application. Parameters provided in datasheets and / or specifications may vary in different applications and performance may vary over time. All operating parameters, including typical parameters, must be validated for each customer application by the customer's technical experts. Product specifications do not expand or otherwise modify Vishay's terms and conditions of purchase, including but not limited to the warranty expressed therein.

Hyperlinks included in this datasheet may direct users to third-party websites. These links are provided as a convenience and for informational purposes only. Inclusion of these hyperlinks does not constitute an endorsement or an approval by Vishay of any of the products, services or opinions of the corporation, organization or individual associated with the third-party website. Vishay disclaims any and all liability and bears no responsibility for the accuracy, legality or content of the third-party website or for that of subsequent links.

Except as expressly indicated in writing, Vishay products are not designed for use in medical, life-saving, or life-sustaining applications or for any other application in which the failure of the Vishay product could result in personal injury or death. Customers using or selling Vishay products not expressly indicated for use in such applications do so at their own risk. Please contact authorized Vishay personnel to obtain written terms and conditions regarding products designed for such applications.

No license, express or implied, by estoppel or otherwise, to any intellectual property rights is granted by this document or by any conduct of Vishay. Product names and markings noted herein may be trademarks of their respective owners.